

Suggested arrangements for Bantham Swoosh swim on 2 July 2016

Swimmers muster in playing field. Portaloos and drinks table also set up in here.

Access under underpass

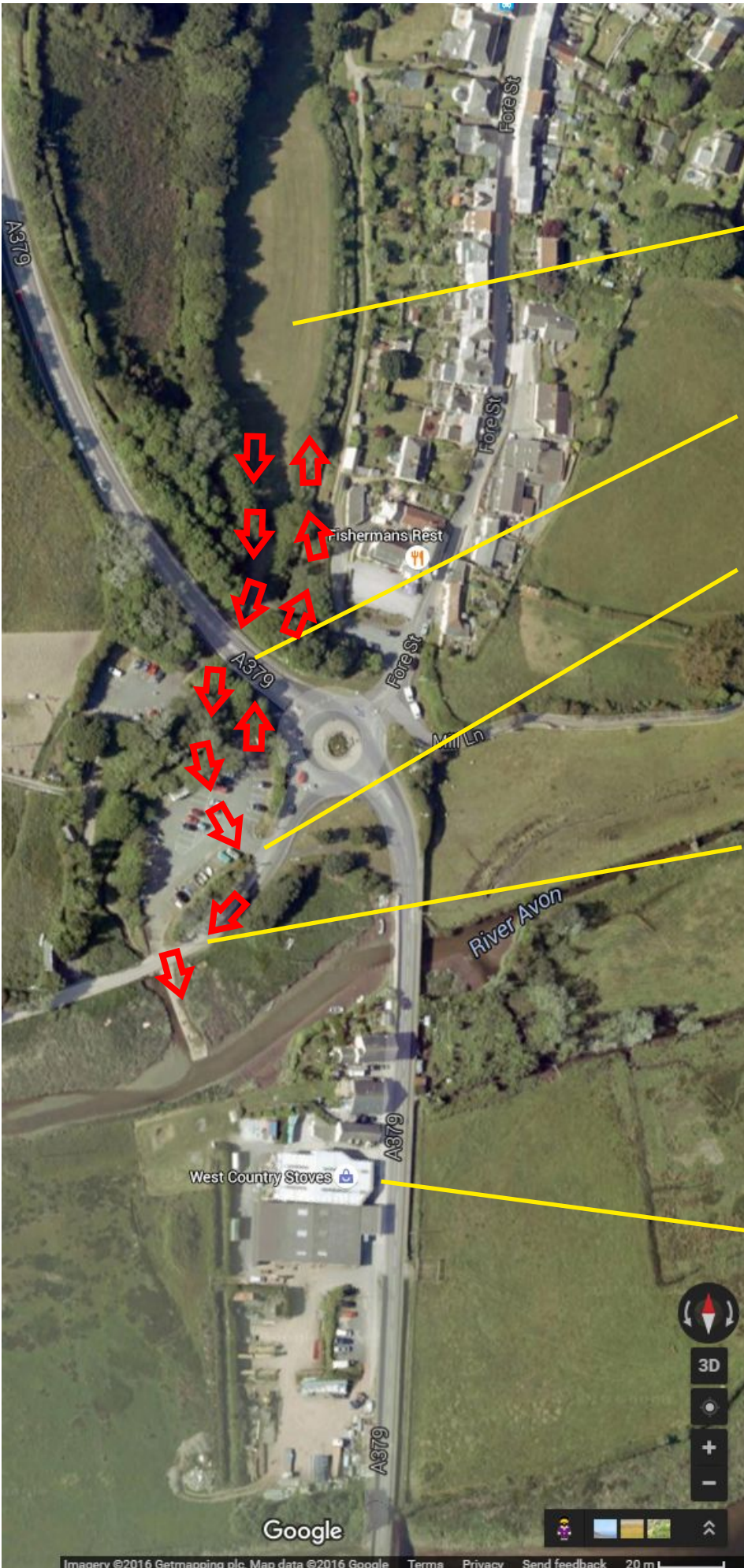
Swimmers dropped off by 33-seater mini coach on tidal road, coaches turn in Timbers.

Swimmers walk to playing field

Timing equipment remains on waters edge, nothing else in Timbers Car Park

West country stoves' forecourt used as additional off-road waiting area for vehicles waiting to come in to the car park if required.

"Flow" of swimmers shown with red arrows:





**Timbers car park
close up for 2 July
2016**

These four spaces
and hatching closed
off to facilitate coach
turning

Minimum two (ideally
four) spaces closed
off for timing
company and turning
coaches.

Swimmers dropped
off on tidal road

Timing equipment
remains on waters
edge, nothing else in
Timbers Car Park

"Flow" of swimmers
shown with red
arrows:

